

# Eclipse Enterprise Edition (3E)

## Smart Payment Software

More than 3 million customers worldwide are using Itron smart payment systems and with more than 20 years experience, Itron provides quality meters, builds and supports systems and provides hosting services for Utilities.

Utilities are turning more and more to smart payment systems for enhanced revenue management and customer service. Such systems have become a key element in the new strategies utilities are defining to move forward in ever-more deregulated environments. For the end customers, they now have the possibility to control their consumption and access value added services, while the utility optimises its revenues. Itron has developed the Eclipse Enterprise Edition to fit these needs.

The Itron Eclipse Enterprise Edition (3E) is Itron's solution to the comprehensive management of an online Smart Payment vending system. It supports both smart cards and Standard Transfer Specification (STS) token transactions, and is the only system existing today that can do both.

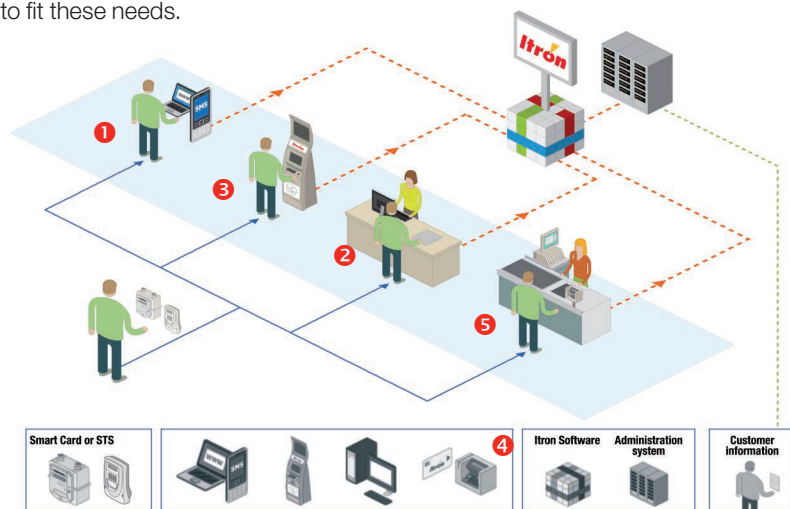
The 3E system uses the STS open standard for smart payment and for far reaching multi-channel vending networks such as:

- 1 Mobile telephone (via SMS) vending
- 2 At home through an Internet site
- 2 Scratch cards that can be bought in any shop
- 3 Cash or bank card based self-service kiosks or vending stations
- 4 Mobile points of sales
- 5 Interface with "third party" vending networks such as banks, post offices, petrol stations & shops

These multiple vending channels ensure payment is made as easy as possible for utility customers.

### KEY BENEFITS

- » Convenient Vending
- » Pay as you go & Prepayment
- » Multi-channel vending
- » STS & Smart Card
- » Enhances revenue
- » Reduces fraud
- » Provides management & customer services (automatic readings, multi-tariff possibilities...)
- » End user controls consumption & debt



3E is scalable from 300 up to 5 million meters and supports two different ways of handling end-user payment:

- » Prepayment; the end-user can pay up front for energy consumption,
- » Pay as you go; the end-user consumes energy as with a regular credit meter but once a pre-defined consumption level or period of time is reached, the customer will need to credit the meter to avoid it closing down.

Multi-language, the system will help to collect meter reading data, outstanding debts or different charges with unlimited tariff possibilities. Tariffs can be updated on a daily basis making it very flexible for utilities to manage. Its data logging capabilities enable utilities to detect and minimize tampering and fraud on the meter side while the system enables consumption profile analysis.

## REVA

The successful operation of the modern Utility is dependant on having high quality information available when it is needed. The vast amount of data generated from numerous systems and operations, makes it very difficult to get an overall picture of key performance indicators and highlights of critical risk areas. REVA was designed to process raw data from many different sectors of the Utility's operations and make key information, critical to pro-active decision making, available in a concise and clear dashboard format. The solution features the following important attributes:

- » Multi System – the solution is not inherent to a particular software solution, but incorporates output from various systems to present a global picture
- » Flexible Integration - The architecture is designed around quick and easy integration updates towards customizable data models including ad-hoc data sets
- » Loss Management Controls and Visibility – The output from the dashboard includes specific system alarms, energy balancing calculations and meter data analysis that is optimized to highlight potential high risk areas of energy loss and initiate the necessary remedial actions



## EXTENDED VENDING GATEWAY (EVG)

Extended Vending Gateway, or EVG, provides our customers with the means of putting a vending station in any location in a matter of seconds whilst keeping central control.

EVG is an independently managed transaction platform, that allows for the activation of a multitude of vending and distribution channels.

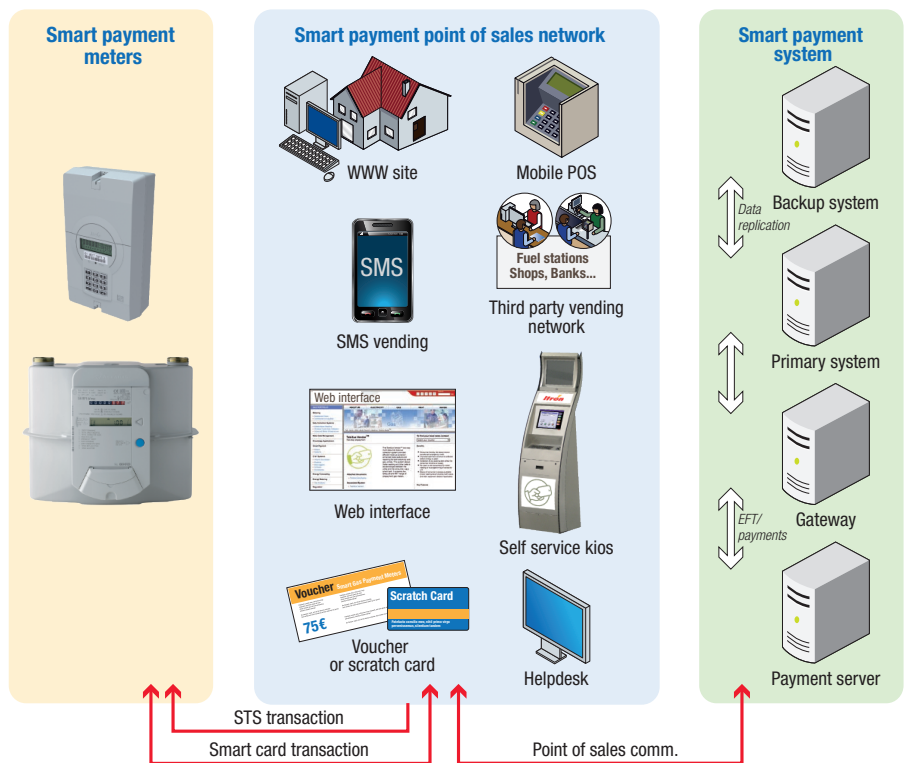
The gateway is built on platform independent technology and optimised for high volume vending, merchant management, administration of complex commission structures and banking standard security.

EVG is an integrated solution that allows it to be plugged into the Eclipse Vending System.

This allows for the expansion of vending and distribution channels of the vending system.

EVG is already integrated with various other payment platforms and brings a true transaction switch to the overall payment architecture. The solution features the following important attributes:

- » Platform independent
- » High volume transaction switching
- » Web-based administration
- » Merchant management - credit, commission
- » Can easily be integrated with other systems and payment gateways



Our company is the world's leading provider of smart metering, data collection and utility software systems, with over 8,000 utilities worldwide relying on our technology to optimize the delivery and use of energy and water.

To realize your smarter energy and water future, start here: [www.itron.com](http://www.itron.com)

For more information, contact your local sales representative or agency:

### ITRON HOUSE

Tygerberg Office Park  
136 Hendrik Verwoerd Drive  
7500 Plattekloof  
South Africa

**Phone:** +27 21 928 1700

**Fax:** +27 21 928 1701